

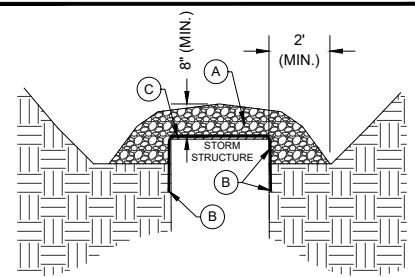
GRADING & EROSION CONTROL PLAN NOTES

- A. CONSTRUCTION ENTRANCE
- B. CONCRETE WASHOUT
- C. INSTALL ROCK FILTER PER DETAIL R-1 ON ALL INTAKES PRIOR TO PAVING AND DROP IN INLET PROTECTION DEVICE FOLLOWING PAVING.
- D. UNLESS OTHERWISE NOTED, ALL DISTURBED AREAS SHALL BE SEEDED WITH TYPE 4 PER SUDAS FOLLOWING CONSTRUCTION.
- E. SEED AREA BETWEEN SIDEWALK AND NE FRISK DRIVE WITH TYPE 1 SEED, PER SUDAS. SEED AREA ALONG NE 18TH STREET WITH TYPE 1 SEED.
- F. CLASS D REVETMENT, 2' THICK. INSTALL AS PER SUDAS 9040. (330 TONS).
- G. STRAW WATTLE (WT).
- H. PROTECT TREES WITHIN THIS AREA.
- I. TEMPORARY TURN AROUND
- J. FURTHER CONSTRUCTION DETAILS FOR THE POND AND TRAIL CAN BE FOUND ON THE PINE LAKE ESTATES - TRAIL IMPROVEMENTS PLANS.

LEGEND

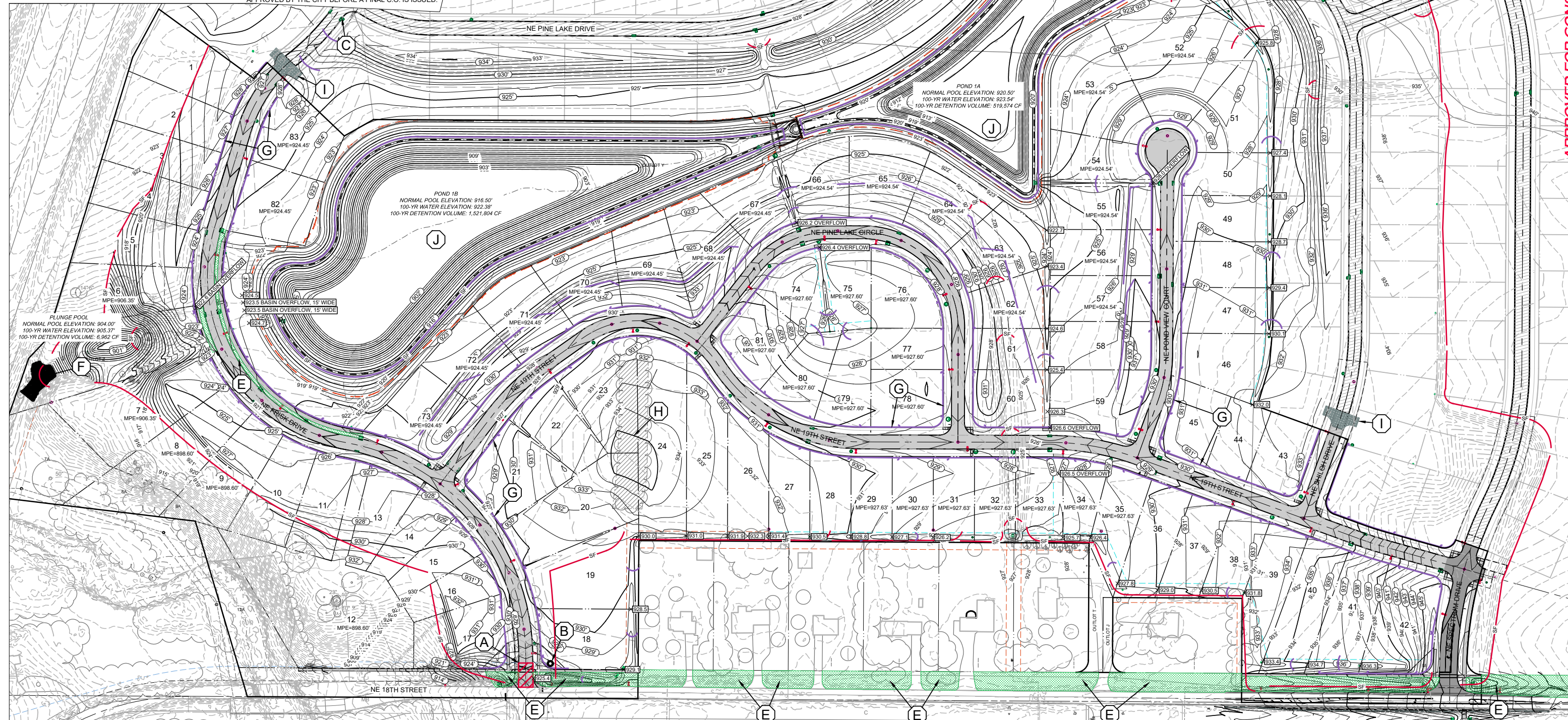
- WT WATTLE
- SF SILT FENCE
- EXTENT OF GRADING
- 100-YR HIGH WATER ELEVATION
- X [960.0'] SPOT ELEVATION/OVERFLOW ELEVATION
- CONSTRUCTION ENTRANCE
- TEMPORARY TURN AROUND

NOTE: THE BUILDER WILL BE RESPONSIBLE FOR PROVIDING THE CITY WITH SURVEY SHOTS BY A P.L.S. IN THE BOTTOM OF THE REAR YARD SWALES AT EACH END OF THE LOT, OR AS IDENTIFIED WITH SPOT ELEVATIONS, FOR LOTS 18, 19, 24-42, 44, AND 46-52. THE ELEVATIONS WILL NEED TO BE APPROVED BY THE CITY BEFORE A FINAL C.O. IS ISSUED.



1-INCH CLEAN STONE
SILT FENCE, BURY END 18" (MIN.)
STEEL SURFACE

*NOTE: MAINTAIN ROCK INLET FILTERS, REPLACE FABRIC AND/OR ROCK WHEN NEEDED



APPROVED FOR CONSTRUCTION BY THE CITY OF ANKENY 09/20/2023

1933 SW MAGAZINE ROAD
ANKENY, IOWA 50023-2555
(515) 965-0123 phone • (515) 965-3322 fax
NILES ASSOCIATES
Civil Engineering - Land Surveying
Landscape Architecture

REVISIONS PER CITY OF ANKENY COMMENTS
1) 1/11/2023 - REVISIONS PER CITY OF ANKENY COMMENTS
2) 1/11/2023 - REVISIONS PER CITY OF ANKENY COMMENTS
3) 1/19/2023 - REVISIONS PER CITY OF ANKENY COMMENTS
4) 1/20/2023 - REVISIONS PER CITY OF ANKENY COMMENTS
5) 1/20/2023 - CITY COUNCIL SUBMITTAL
6) 1/20/2023 - REVISIONS PER CITY COMMENTS
7) 1/20/2023 - REVISE PER ELEVATIONS ON 5105, 5106, AND 51251

NOTE: NILES ASSOCIATES, THE WRITER, HAS PREPARED THESE PLANS AND SPECIFICATIONS TO THE BEST OF HIS ABILITY AND WITHOUT LIABILITY TO THE ENGINEER OR ARCHITECT. THE ENGINEER OR ARCHITECT SHALL BE RESPONSIBLE FOR OBTAINING ALL NECESSARY PERMITS AND FOR FOLLOWING ALL APPLICABLE CODES, ORDINANCES, AND REGULATIONS. NILES ASSOCIATES ACCEPTS NO LIABILITY FOR CONFLICTS WHICH ARE ALLEGED.

PROJECT NAME: PINE LAKE ESTATES PLAT 1
ANKEHY, IOWA
DESCRIPTION: GRADING & EROSION CONTROL

PROJECT NAME	PROJECT NO.
DATE	23002
DRAWN BY	BLH
CHECKED BY	JTN
SHEET SIZE	24" X 36"
SHEET TITLE	R.01
SHEET NO.	53 / 54